

1. Sinfonie
(1986)

Friedrich Radermacher

Allegro
♩ = 120

f *f* *f* *f* *f*

7 *p*

12 *ff* *rit.*

15 *a tempo*

21 *p* *fp*

28 *mf*

36 *mf*

42 *a 2* *mf cresc.* *mf*

48 *poco rit.* *p espr.*

54 **A** *a tempo* *p*

60

3

a2

p

67

4

ff

76

a2

81

B

4

1.

p

89

95

mf cresc.

101

a2

ff

pp

107

p

112

ff

118

pp

p

124

f

129 *rit.*

p

[illegible]

142 **D** a tempo

pp *f* *mf*

147

sfz

152

Example 152

mf

ff

158



p

163

1. solo

The first solo section begins at measure 163. It starts with a treble clef, a key signature of three sharps (F#, C#, G#), and a common time signature (C). The first measure contains a half note G4, followed by a quarter rest, and then a quarter note G4. A fermata is placed over the first measure. The second measure is a whole rest. The third measure is in 3/4 time and contains a half note G4, followed by a quarter note A4. The fourth measure is in 3/4 time and contains a half note G4, followed by a quarter note F#4. The fifth measure is in common time and contains a half note G4, followed by a quarter note A4. The sixth measure is in 3/4 time and contains a half note G4, followed by a quarter note F#4. The section ends with a double bar line.

168

3/4

C

171

pp

E

175

182

2. Satz

Poco adagio

♩ = 68

195

204

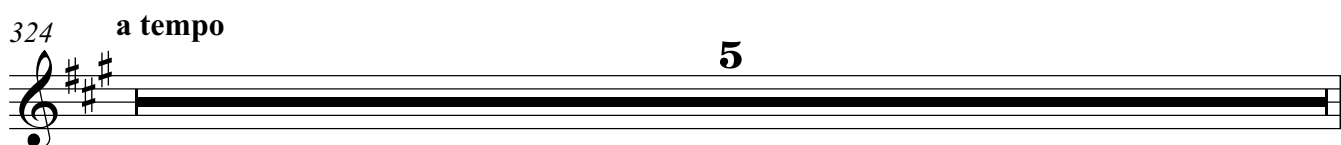
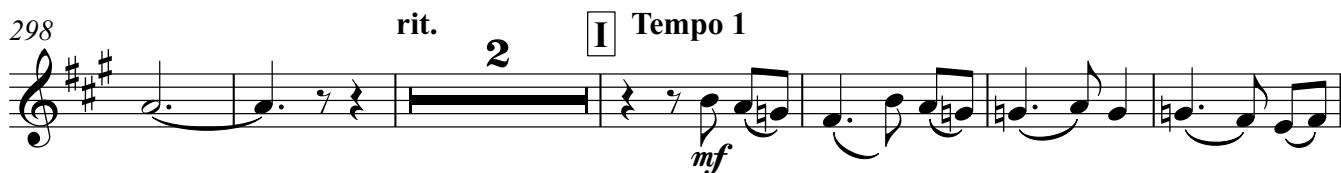
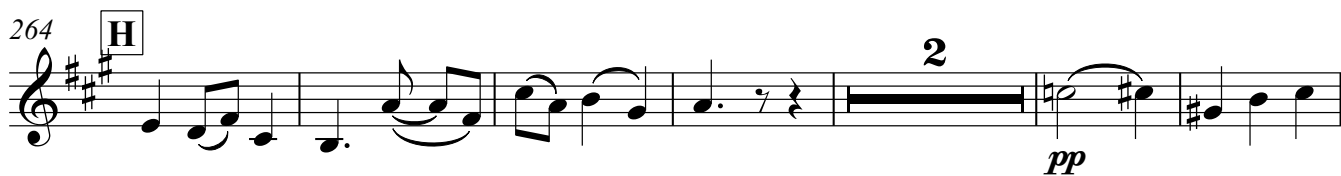
212

226

234

242

250



329 1.

337 2

344 1. espr

p *pp* *mf* *pp*

3. Satz

Allegro moderato

♩ = 138

2

3

6

8 1.

14 1.

19 a2

24 3

30 6

40

p *f* *mf* *f* *sfz* *pp*

105 *mf*

110 **M** 5 1. 5 *p* *p*

123 *p* *f*

128 3 1. *p* *f*

135 *fp* *pp*

142 **N** 2 3 3 *p*

149 1. *p* 3 *p* 3 3

155 *p* 3 3 *f* 3 3 3

161 *p* *ff*

166 *f* *f* *sfz*

171 *sfz* *pp* *ff*

176 *ff* *rit.*

4.Satz

Adagio

♩ = 72

pp

187 *p* **6**

199 *rit.* *a tempo* **2** *pp*

207 **2** *pp* **2** *p*

216 *p*

224 *p* **7** *pp*

237 *rit.* *pp*

241 *perdendosi* *ppp*

5. Satz

Allegro con brio

♩ = 140

f

7

a2

12

f

16

p **2** *p*

23

pp

29

O 1. solo

p espr

35

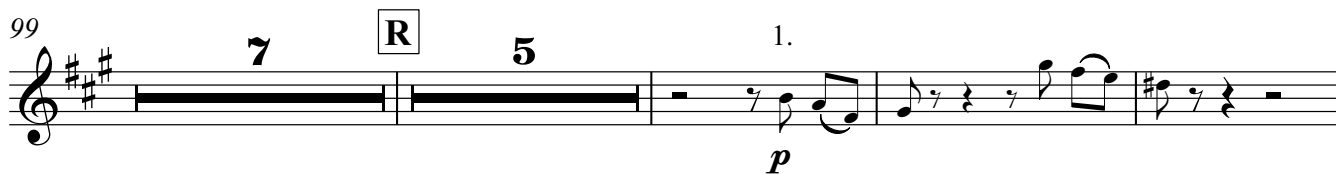
39

44

mf

48

f



122 *p* *p*

128 **S** 5 1. *p*

137

142 1. *p* *f*

148 *mf* *f*

154 **T** 3 1. *ff*

162 2 1. *f*

168 2 *mf* *ff*

174 *fff* *ppp*

180 *pp* *ff* a2 2

